

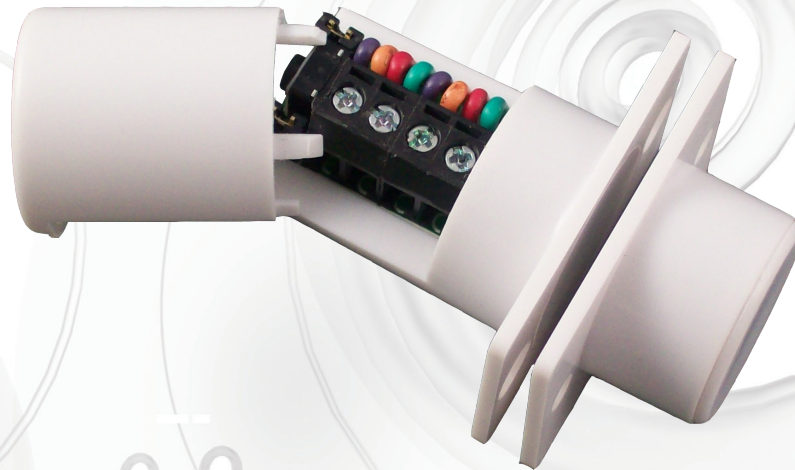


FIRE & SECURITY



FC508/WH/MULTI/G2/EN

Flush Quick Fit Door Contact



- Screw terminal block, no junction box required
- Microswitch tamper
- Selectable end of line resistor
- Can use own resistors
- Available in White or Brown
- Can be fitted in double pole
- Can be used on double door configuration

Connections	4 Terminals	Switching Current	500mA @ 12Vdc
Reed Switches	1	Contact Material	Rhodium
Pull-in Gap	9mm (Y) 15mm (Z)	Temperature Range	-15° C to +40° C
Material	High Impact Polystyrene	Colours	White/Brown
Contact Size mm	33 x 22 x 32	Tamper	Cover & RFMS
Magnet Size mm	33 x 22 x 13	Magnetic Immunity	N/A
Contact Form	SPST form A	Standards	EN50131-2-6 Grade 2
Voltage Range	12v DC	Environmental Class	II



FireBrand

2Y-LINK



CQR Fire & Security
125 Pasture Road, Moreton, Wirral, CH46 4TH, UK



Sales: 0151 606 1000 Tech: 0151 606 6311 www.cqr.co.uk info@cqr.co.uk