

WatchOUT™

Reliable Outdoor Detection

Providing reliable intruder detection in outdoor environments is a huge challenge. WatchOUT™ uses **Selective Event Recognition** to distinguish between real intrusion events and the numerous false alarm causes inherent in the unstable outdoor environment.

WatchOUT's **Selective Event Recognition** is enabled by 4 detection channels:

- ◆ **Sway Recognition Technology** uses 2 Microwave channels for recognizing and excluding swaying objects such as bushes or tree limbs.
- ◆ **Digital Correlation Technology** uses 2 PIR channels with separate optics to ensure that only targets creating a similar and correlated signal in both PIR channels can trigger an alarm. Pets, rapid temperature changes, and reflections are ignored.

WatchOUT™ by Rokonet - Reliable Outdoor Detection Begins Here!



Main Features

- 2 MW and 2 PIR channels
- Coverage 15m 90° or 23m 5°
- 1.0m – 2.7m mounting height
- Pet immune up to 70cm (2'4") animal height
- Wide range of professional swivels
- Optional high quality camera
- Active IR for Anti-Mask and "Dirty Lens" alerts
- Unique Remote Control and Diagnostic capabilities
- MW "Anti-Collision" enables adjacent detector installations
- Protective hood and IP65 environment rating

ROKONET

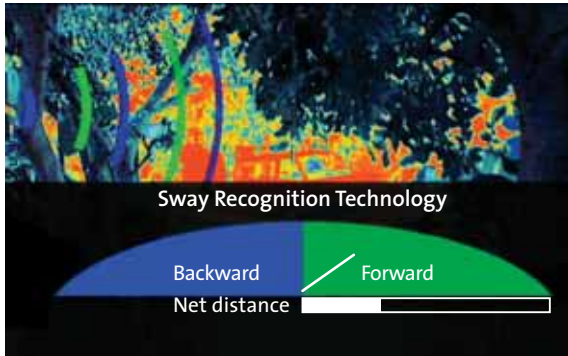
R I S C O G R O U P

Intelligence in the Service of Security

Sway Recognition Technology

Sway Recognition Technology recognizes and excludes objects that sway but don't travel such as tree branches, bushes, swaying signs, etc.

Sway Recognition Technology is enabled by two microwave channels that distinguish between the microwave pulses of approaching and receding targets, thus measuring the target's net distance. Objects that sway but don't move more than a set distance are cancelled out.



Anti-Mask and "Dirty Lens" alerts

Anti-mask protection is achieved by 4 active IR channels that continuously monitor and warn of any lens masking attempts.

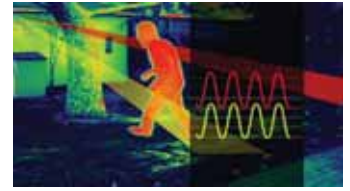
The 4 active IR channels also provide a unique "dirty lens" alert via a separate output or via the ProSYS bus, indicating that lens cleaning is required.

Digital Correlation Technology

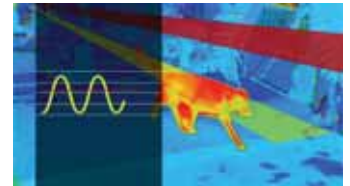
Digital Correlation Technology is based on comparing the signals of two independent PIR channels, with separate lenses that create a vertically interlacing detection pattern.

Digital Correlation Technology ensures that that only targets that cause similar and correlated signal patterns in both PIR channels are taken into account. This eliminates false alarms from pets, reflections, car headlights, and rapid temperature changes caused by wind or changing sun/shade patterns from cloud movement.

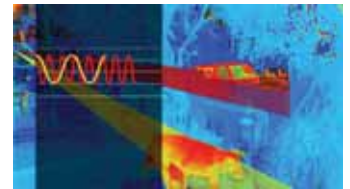
Digital Correlation Technology is a major improvement over conventional detectors with two PIR channels, which may false alarm when unrelated events, with different signal patterns, occur simultaneously in each of the PIR channels.



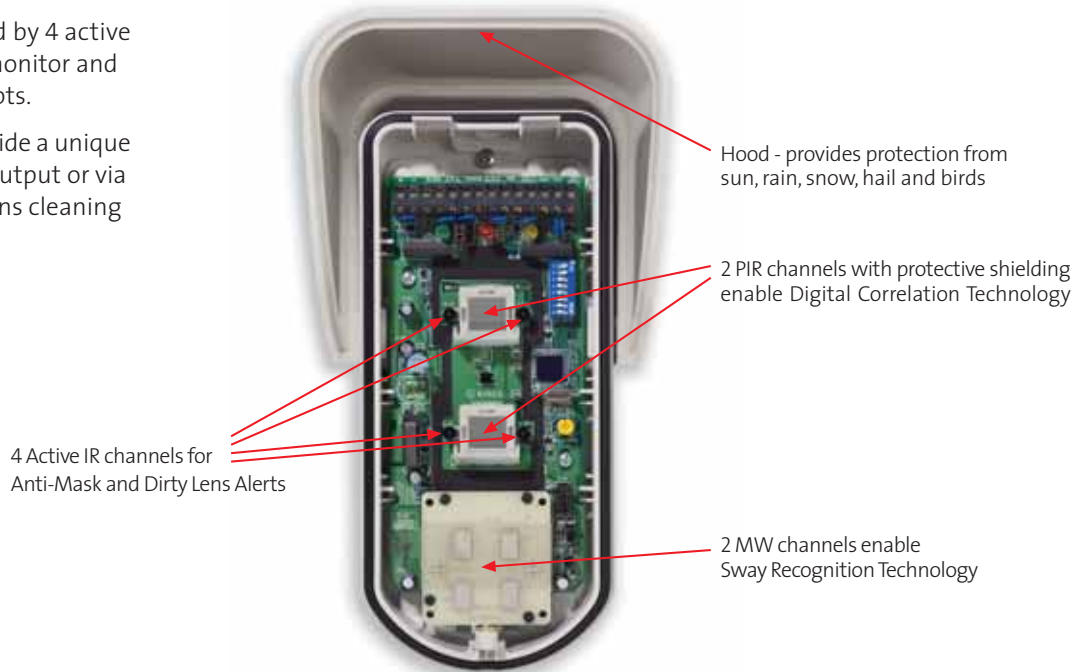
Correlated signal in both channels = PIR Alarm



Signal in one channel only = No PIR Alarm



Uncorrelated signal = No PIR Alarm



WatchOUT with Camera

WatchOUT detectors enable inclusion of a high-definition camera for viewing the cause of the alarm.

Camera options include high definition colour or black and white cameras with wide-angle or long-range lenses.

Outdoor detector cameras are ideal in applications where budget is limited. It is more cost-effective to install a WatchOUT with camera than a separate weather-proof camera.



Remote Diagnostic and Control

Up to 32 WatchOUT detectors can be installed on the bus of Rokonet's ProSYS Integrated Security System with no need for physical zone expanders.

This provides time-saving remote control of all detector settings and advanced remote diagnostic capabilities, via the ProSYS keypad or the Upload/Download software.

Remote Control setting capabilities

- LED control: 3 LEDs / 1 LED / Off
- Detection sensitivity
- MW range
- Alarm logic: AND / OR
- Lens type: Wide-angle / Long-range
- Anti-mask: On / Off
- Follow arm: On / Off



Remote Diagnostic capabilities

- Voltage input to the detector
- Signal level and noise level of each PIR sensor
- Signal level and noise level of each MW channel
- Software version

Installation flexibility for precise coverage

WatchOUT™ detectors feature exceptional installation flexibility, enabling you to provide precise coverage for the terrain to be protected. This flexibility is due to the detector's variable mounting height from 1.0m to 2.7m (1'3" to 8'10"), and due to the wide range of swivels available: Standard Wall Swivel, Barrier Swivel, Conduit Adaptor, Swivel Metal Conduit and Pole Adaptor, all with anti-vandal wire protection. The Swivel Metal Conduit provides a solution for installations with the Standard Swivel when wiring is external to the wall.



Standard Swivel



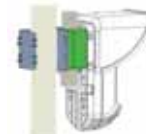
Pole adaptor



Barrier Swivel



Pole Adaptor



Pole and Conduit Adaptors



Conduit Adaptor

WatchOUT Specifications

	WatchOUT DT	WatchOUT PIR
Detection method	Two microwave and Two PIR channels	Two PIR channels
Wide angle coverage	15m (50ft) 90°	12m (40ft) 90°
Long-range coverage	23m (75ft) 5°	23m (75ft) 5°
Barrier coverage	15m (50ft) 5°	15m (50ft) 5°
Mounting height	1m to 2.7m (3'3" to 8'10")	
Pet immunity	Animals up to 70cm (2'4") head height with no weight limitation	
Anti-mask and dirty lens indications	Via 4 active IR channels	-
Day/Night output	-	Activated via photocell
Operating voltage	9-16 VDC	
Current consumption Relay mode at 12V	45mA typical, 70mA maximum	42mA typical, 65mA maximum
Current consumption bus mode at 12V	30mA typical, 55mA maximum	37mA typical, 61mA maximum
Alarm contact	NC, 100mA, 24 VDC	
Tamper contact	NC, 100mA, 24 VDC	
Anti-mask contact	NC, 100mA, 24 VDC	-
Dirty lens output	70mA open collector	-
RF immunity	40V/m from 30MHz to 2 GHz	
Environment rating	IP 65	
Operating temperature	-30°C to 60°C (-22°F to 140°F)	
Dimensions including hood (LxWxD)	230 x 121 x 123mm (9 x 4.76x 4.85 inch)	

Ordering Information

Part Number	Description
RK315DT00xxA	WatchOUT DT with 2 MW, 2 PIR channels and Anti-Mask. Includes additional barrier lens, long-range lens, pet immunity lens for low installations and standard swivel.
RK312PR0000A	WatchOUT PIR with 2 PIR channels. Includes additional barrier lens, long-range lens, pet immunity lens for low installations and standard swivel.
RA300B00000A	Barrier swivel for WatchOUT
RA300P00000A	Pole adaptor for WatchOUT
RA300C00000A	Conduit adaptor for WatchOUT
RA300SC0000A	Swivel Metal Conduit for WatchOUT
RA300VC017PA	Camera for WatchOUT, PAL, narrow-angle
RA300VC053PA	Camera for WatchOUT, PAL, wide-angle
RA300VPS100A	Power Supply for WatchOUT Camera

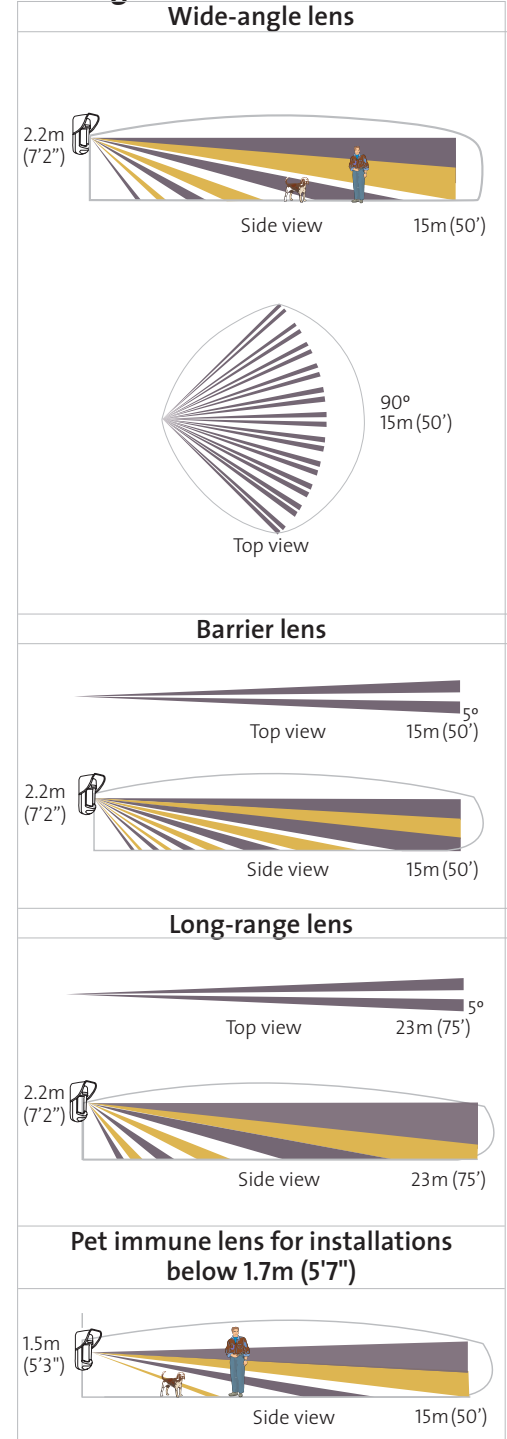
- xx** select the microwave frequency for your market according to the following list:
00 10.525 GHz for most markets
UK 10.587 GHz for UK
FR 9.9 GHz for France and Czech Republic
DE 9.35 for Germany

EN 50131-1 Grade 3, Class III (Grade 2 - for PIR model)



© 08/2005 ROKONET Electronics Ltd.

Coverage Patterns



ROKONET
R I S C O G R O U P

www.rokonet.com

U.S.A. - Rokonet Industries U.S.A. Inc.
 Toll Free: 1-800-344-2025, Tel: +305-592-3820, Fax: +305-592-3825, E-mail: sales@rokonetusa.com
UNITED KINGDOM - Risco Group UK.
 National Sales: 0870-60-510000, Fax: +44-161-6555501, E-mail: sales@riscoegroup.co.uk, www.riscoegroup.com
ITALY - Rokonet Electronics S.R.L.
 Tel: +39-02-392-5354, Fax: +39-02-392-5131, E-mail: info@rokonet.it
SPAIN - Rokonet Iberia S.L.
 Tel: +34-91-490-2133, Fax: +34-91-490-2134, E-mail: sales@rokonet.es
BRASIL - Rokonet Brasil Ltda.
 Tel: +55-11-3661-8767, Fax: +55-11-3661-7783, E-mail: rokonet@rokonet.com.br
ISRAEL - Rokonet Electronics Ltd.
 Tel: +972(0)3-963-7777, Fax: +972(0)3-961-6584, E-mail: info@rokonet.co.il